

UVP ColonyDoc-It™

Fast & Easy Automated Colony Counting

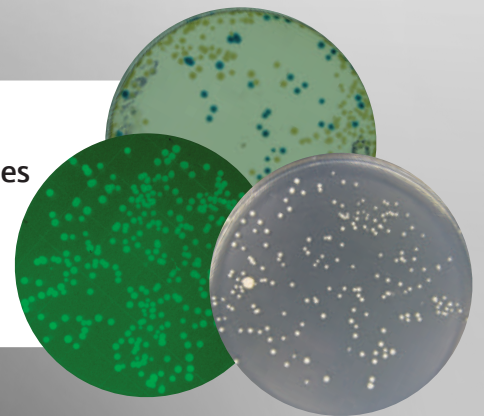


The intuitive user interface enables users to quickly capture and count colonies. **Simply ...**

- Place the colonies in the station and turn on the appropriate light
- Capture a high resolution colony image
- Click a button to automatically count the colonies

It's that simple! Once the colony plate is illuminated, the software interface controls the camera for fast image capture. The start colony counting button enables one touch automatic colony counting.

The ColonyDoc-It Station addresses the need to quickly process and count colonies in clinical, research and microbiological studies including the following: Fluids and food contamination, Molecular biology research, Antibiotic testing, Hygiene studies, Pharmaceutical studies, and Environmental studies.



Quickly count colonies and generate detailed reports.



- Capture colony images with the integrated high resolution digital color camera
- Insert and select multiple emission filters
- Position plate or filter, with sizes ranging from 33 - 150mm, in the easy access alcove
- Minimize space requirements with the compact footprint
- Quickly install the system
- Select epi white or blue illumination
- Define user templates to include counting parameters such as color differentiation
- Attach the doors to create a darkroom environment needed to visualize GFP
- Select darkfield or white light transillumination

Fast automatic and accurate.

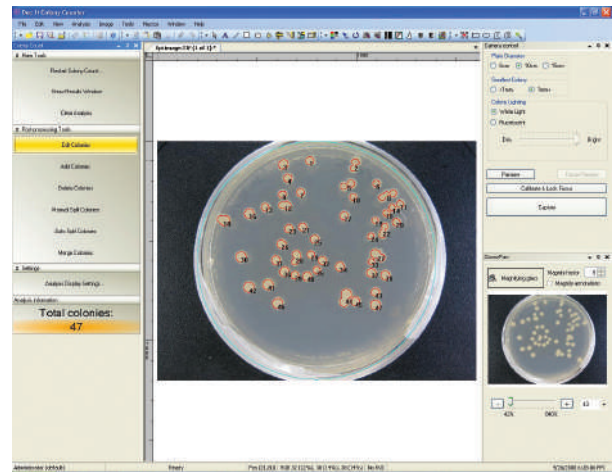
The ColonyDoc-It software loads on the user's computer for camera control, image capture and colony counting. Fast automatic and accurate colony counting can be generated along with detailed statistics.

- Define parameters including color differentiation and filter by group or size
- Identify colonies as small as 0.08mm in diameter
- Perform zone sizing and spiral analysis
- Split, merge, add and delete colonies

Extensive software functions.

In addition to colony counting, the easy to use software offers many image enhancements, annotation and reporting tools.

- Save images in multiple file formats
- Export data to Excel or other programs
- Create macros for repeat experiments
- Supports compliance with 21 CFR Part 11



Users can create templates allowing the same settings to be selected each time a new experiment is run. Then count from the template to quickly generate results.

Darkroom Specifications:

Lighting	Epi white Transillumination white Epi blue Darkfield
Filter:	Two positions (filters optional)
Dimensions:	Physical: 13W x 12.5D x 17.5H in. (343 x 318 x 445mm) Shipping: 22.5W x 12.3D x 19.8 in. (572 x 312 x 503mm)
Weight:	Actual: 20 lbs. (9 kg) Shipping: 27 lbs. (12.3 kg)

Camera Specifications:

Megapixels:	High resolution color
Lens:	18-55mm zoom
Image Resolution:	Up to 5184 x 2484 pixels
Interface:	USB

Software:

Colony Counting:	Automated
Image Capture:	Software control
Enhancement:	Annotation, lines, etc.
Reports:	Detailed colony counting statistical reports are exportable to Excel

** Camera specifications subject to change without notice. Contact AJ US for current camera specifications.



WolfLabs

Pricing on any accessories shown can be found by keying the part number into the search box on our website.

The specifications listed in this brochure are subject to change by the manufacturer and therefore cannot be guaranteed to be correct. If there are aspects of the specification that must be guaranteed, please provide these to our sales team so that details can be confirmed.

www.wolflabs.co.uk

Tel : 01759 301142

Fax : 01759 301143

sales@wolflabs.co.uk

Please contact us if this literature doesn't answer all your questions.